

**NHS BLOOD AND TRANSPLANT
ORGAN DONATION AND TRANSPLANTATION DIRECTORATE**

PANCREAS ADVISORY GROUP

ISOLATION STATISTICS

SUMMARY

INTRODUCTION

- 1 Information on islet isolations performed by isolation centres has previously been provided directly from the isolation centres. It was requested at the PAGISG meeting in October 2016 that this information be reported by NHS Blood and Transplant in the future.
- 2 This paper provides information on the outcome of pancreases retrieved with the intention to transplant as pancreas islets and includes a summary by islet isolation centre.

DATA

- 3 Data on 135 donors between 1 April 2016 and 31 March 2017 whose pancreas was taken and accepted for islet transplantation were analysed from the UK Transplant Registry (UKTR).
- 4 In cases where the islet page of PDI form was not returned or returned but not completed fully then other sources of data were used to indicate if isolation had taken place, including the reason for non-use recorded by the ODT Duty Office.

RESULTS

- 5 Of the 135 donors analysed, the islet page of the PDI form was returned in 118 (87%) cases. Of the 133 organs indicated to have arrived at an isolation centre, 131 were indicated to have been used for isolation and 119 (91%) had isolation completed. Of these 119 completed isolations, 34 resulted in transplantation giving a conversion rate of 29%.

ACTION

- 6 Members are asked to review and comment on the content of the paper. Centres are asked to ensure that the islet page of the PDI form is completed fully and returned to ODT Information Services. Where information was unknown in this time period, centres may be contacted in order to get a complete picture. It would also be appreciated if isolation centres could be consistent in the naming of their centre. A variety of names are currently being used as it is a free text box on the form.

Claire Counter
Statistics and Clinical Studies

September 2017

**NHS BLOOD AND TRANSPLANT
ORGAN DONATION AND TRANSPLANTATION DIRECTORATE**

PANCREAS ADVISORY GROUP ISLET STEERING GROUP

ISOLATION STATISTICS

INTRODUCTION

- 7 Information on islet isolations performed by isolation centres has previously been provided directly from the isolation centres. It was requested at the PAGISG meeting in October 2016 that this information be reported by NHS Blood and Transplant in the future.
- 8 This paper provides information on the outcome of pancreases retrieved with the intention to transplant as pancreas islets and includes a summary by islet isolation centre.

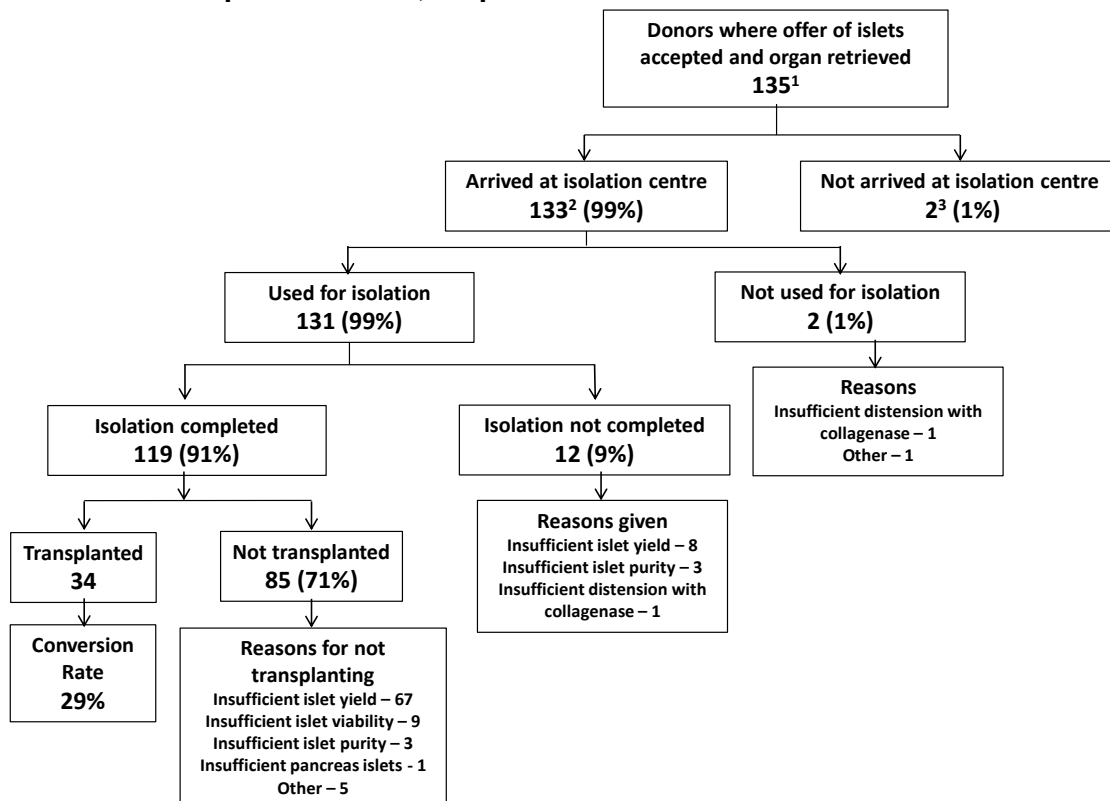
DATA

- 9 Data on 135 donors between 1 April 2016 and 31 March 2017 whose pancreas was taken and accepted for islet transplantation were analysed from the UK Transplant Registry (UKTR). Information from the islet isolation page of the pancreas donor information (PDI) form was used to identify those pancreases arriving at an isolation centre and whether the pancreas was isolated and subsequently transplanted.
- 10 In cases where the islet page of PDI form was not returned or returned but not completed fully then other sources of data were used to indicate if isolation had taken place, including the reason for non-use recorded by the ODT Duty Office.

RESULTS

- 11 Of the 135 donors analysed, the islet page of the PDI form was returned in 118 (87%) cases. Of the 17 donors where a form was not completed, 10 had resulted in an islet transplant and in a further five cases the reason for non-use indicated that isolation was completed. In the final two cases it was unclear whether the organ was received at an isolation centre as the reasons for non-use recorded by the ODT Duty Office were stated as 'lump on pancreas' and 'isolation lab too busy'.
- 12 **Figure 1** shows the outcome of all of the 135 donors where the pancreas was accepted and retrieved with the intention to transplant as islets. Of the 135, 131 were indicated to have been used for isolation and 119 (91%) had isolation completed. Of the 119, 34 resulted in transplantation giving a conversion rate of 29%. Of the remaining 85 completed isolations, 67 (79%) were not transplanted due to insufficient islet yield.

Figure 1 Outcome of pancreas donors where organ was retrieved with the intention to transplant as islets, 1 April 2016 – 31 March 2017



¹ Includes 17 cases where pancreas donor information form was not received

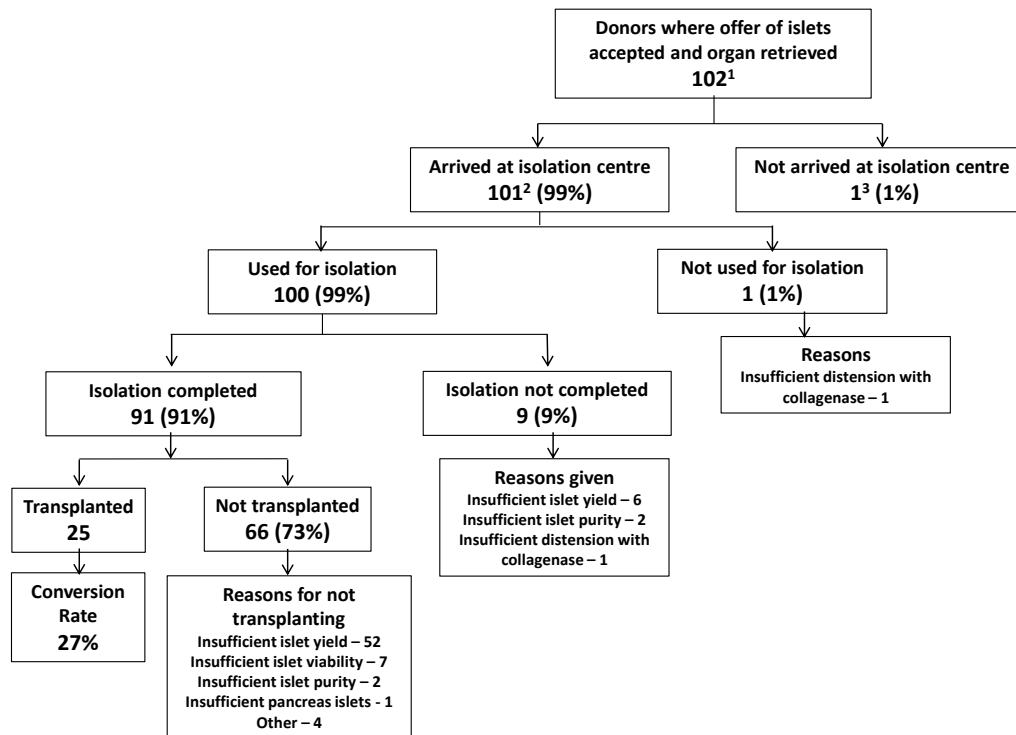
² Includes 15 cases where form not received and other sources of information have been used to categorise the donors.

³ Includes 2 cases where form not received and information from other sources could not clearly identify if organ was received by isolation centre.

13 **Figures 2 and 3** show similar information to Figure 1, but separately for those donors who were first offered for islet patients and those first offered for whole transplantation.

14 The proportion of organs where isolation was completed was similar between the two groups 91% and 90% for those donors first offered to an islet patient and first offered to a whole patient, respectively. The conversion rate was slightly higher in the group where the donor was first offered to a whole patient, 32% compared with 27%.

Figure 2 Outcome of pancreas donors where organ was retrieved with the intention to transplant as islets and donor was offered to an islet patient first, 1 April 2016 – 31 March 2017

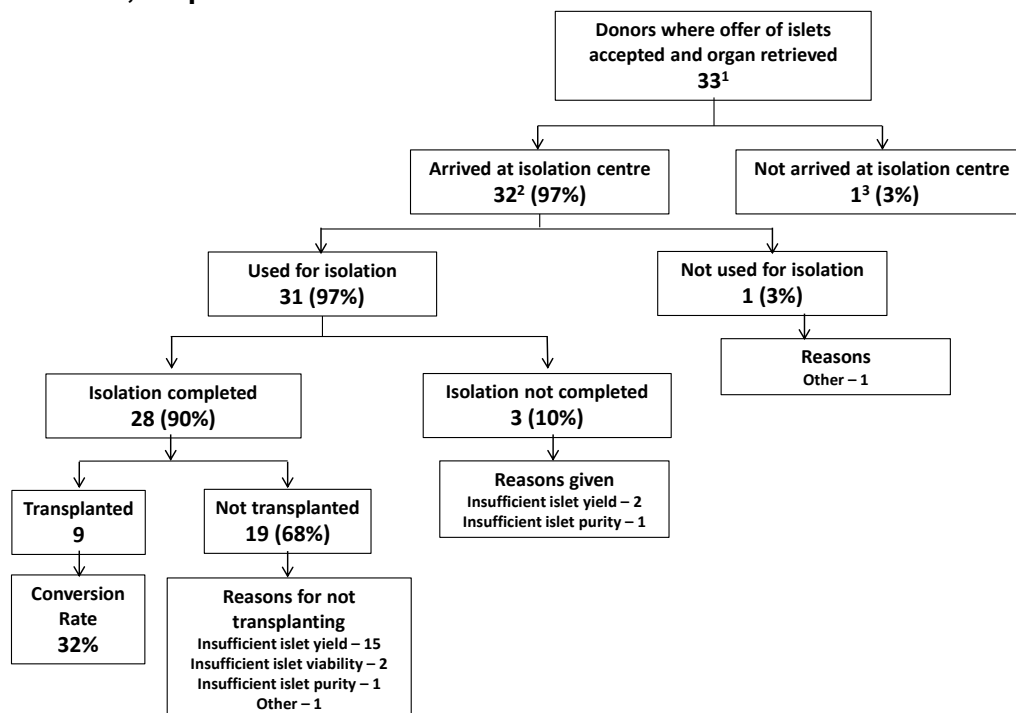


¹ Includes 15 cases where pancreas donor information form was not received

² Includes 14 cases where form not received and other sources of information have been used to categorise the donors.

³ Includes 1 case where form not received and information from other sources could not clearly identify if organ was received by isolation centre.

Figure 3 Outcome of pancreas donors where organ was retrieved with the intention to transplant as islets and donor was offered to a whole pancreas patient first, 1 April 2016 – 31 March 2017



¹ Includes 2 cases where pancreas donor information form was not received

² Includes 1 case where form not received and other sources of information have been used to categorise the donors.

³ Includes 1 case where form not received and information from other sources could not clearly identify if organ was received by isolation centre.

- 15 **Table 1** shows information on the 133 organs indicated to have arrived at an isolation centre, by the centre as reported on the islet page of the PDI form. This table includes 17 cases where the form was not returned or the isolation centre was not reported on the form but the isolation centre has been found by looking through duty office notes.

Islet isolation centre	Arrived at centre	Isolation started		Isolation completed²	
	N	N	(%)	N	(%)
Edinburgh	41	40	(97.6)	40	(100)
King's College	43	42	(97.7)	40	(95.2)
Oxford	49	49	(100)	39	(79.6)
TOTAL	133¹	131	(98.5)	119	(90.8)

¹ Excludes two cases where a form was not returned and unclear if the pancreas arrived at an isolation centre
² Isolation completion usually reflects the quality of the pancreas being processed

ACTION

- 16 Members are asked to review and comment on the content of the paper. Centres are asked to ensure that the islet page of the PDI form is completed fully and returned to ODT Information Services. Where information was unknown in this time period, centres may be contacted in order to get a complete picture.
- 17 It would also be appreciated if isolation centres could be consistent in the naming of their centre. A variety of names are currently being used as it is a free text box on the form.
- 18 A copy of the pancreas form is also attached for information.