

# Commissioning Performance Report

Reporting period: January 2018

Data extraction date: 29 March 2018



Publication date: <Enter when narrative complete>

# CONTENTS

## 1. EXECUTIVE SUMMARY

## 2. COMMISSIONING Key Performance Measures – LIVING DONATION

- 2.1. Objective 1 - Increase the number of living donors
- 2.2. Objective 2 – Increase the number of pre-emptive living donor kidney transplants
- 2.3. Objective 3 – Increase efficiency in the UK Living Kidney Donor Sharing Schemes

## 3. COMMISSIONING Key Performance Measures – NATIONAL ORGAN RETRIEVAL SERVICE

- 3.1. Objective 4 – Increase the number of organs retrieved and transplanted
- 3.2. Objective 5 – Minimise organ retrieval damage
- 3.3. Objective 6 - Maximise DCD organ retrieval by meeting stand-down target
- 3.4. Objective 7 - Timely dispatch of retrieval teams to donor hospital
- 3.5. Objective 8 - Timely arrival of retrieval teams at donor hospital
- 3.6. Objective 9 - Minimise wait at donor hospital prior to retrieval
- 3.7. Objective 10 - Monitor activity across NORS teams

# 1. EXECUTIVE SUMMARY

**Key achievements**

**Challenges**

**Major risks and issues**

KEY ACTIONS				
Action	Owner	Due Date	Status	Rank

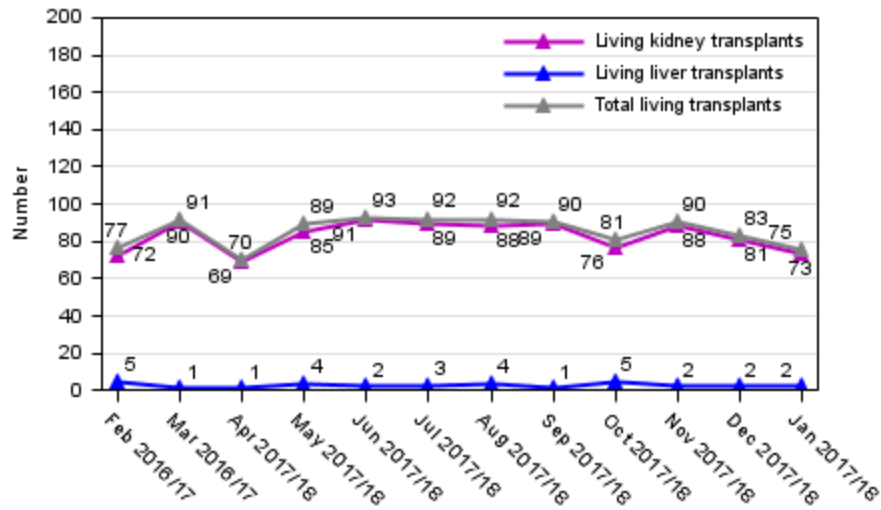
## 2. COMMISSIONING Key Performance Measures – LIVING DONATION

### 2.1. Objective 1 - Increase the number of living donors

Table 2.1: Number of living donor transplants by organ type

	Feb 2016/17	Mar 2016/17	Apr 2017/18	May 2017/18	Jun 2017/18	Jul 2017/18	Aug 2017/18	Sep 2017/18	Oct 2017/18	Nov 2017/18	Dec 2017/18	Jan 2017/18	YTD 2017/18 (Apr-Jan)
Number of living donor kidney transplants	72	90	69	85	91	89	88	89	76	88	81	73	829
Number of living donor liver transplants	5	1	1	4	2	3	4	1	5	2	2	2	26
Total number of living donor transplants	77	91	70	89	93	92	92	90	81	90	83	75	855

Fig. 2.1 Number of living donor transplants by type of organ



## 2.2. Objective 2 – Increase the number of pre-emptive living donor kidney transplants

**Table 2.2: Number of pre-emptive living donor kidney transplants**

	Feb 2016/17	Mar 2016/17	Apr 2017/18	May 2017/18	Jun 2017/18	Jul 2017/18	Aug 2017/18	Sep 2017/18	Oct 2017/18	Nov 2017/18	Dec 2017/18	Jan 2017/18	YTD 2017/18 (Apr-Jan)
Number of living donor kidney transplants	72	90	69	85	91	89	88	89	76	88	81	73	829
Number with reported dialysis status	72	90	69	84	90	88	87	88	76	85	78	66	811
Number of pre-emptive living donor kidney transplants	37	41	27	36	39	34	35	38	26	38	25	32	330
Percentage of pre-emptive living donor kidney transplants	51.4	45.6	39.1	42.9	43.3	38.6	40.2	43.2	34.2	44.7	32.1	48.5	40.7

## 2.3. Objective 3 – Increase efficiency in the UK Living Kidney Donor Sharing Schemes

**Table 2.3: UK living kidney donor sharing schemes**

Date represents run date of living donor kidney matching run							
	Apr 2016/17	Jul 2016/17	Oct 2016/17	Jan 2016/17	Apr 2017/18	Jul 2017/18	Oct 2016/17
Number of paired donation transplants identified	31	50	51	58	75	67	78
Number of paired donation transplants proceeding	20	34	42	29	39	34	45
Proportion of paired donation transplants proceeding	64.5	68.0	82.4	50.0	52.0	50.7	57.7
Number of paired donation transplants proceeding within 8 weeks	7	5	28	16	19	15	28
Proportion of paired donation transplants proceeding within 8 weeks	35.0	14.7	66.7	55.2	48.7	44.1	62.2

### 3. COMMISSIONING Key Performance Measures – NATIONAL ORGAN RETRIEVAL SERVICE

#### 3.1. Objective 4 – Increase the number of organs retrieved and transplanted from deceased donors

Table 4.1: Number of organs (DBD and DCD) retrieved by NORS teams

Retrieval team	Number of organs (kidneys, livers, pancreases, hearts and lungs) retrieved							
	Q1 2016/17	Q2 2016/17	Q3 2016/17	Q4 2016/17	Q1 2017/18	Q2 2017/18	Q3 2017/18	YTD 2017/18 (Apr-Jan)
<b>Abdominal</b>								
Birmingham	109	113	137	127	129	133	145	453
Cambridge	120	150	162	126	151	179	160	578
Cardiff	12	36	51	53	54	30	36	153
Edinburgh	86	100	94	108	80	56	104	277
King's College	200	154	213	199	188	208	237	706
Leeds	83	63	101	89	109	106	102	364
Manchester	79	101	114	76	96	77	96	307
Newcastle	121	107	121	127	103	109	98	360
Oxford	91	101	86	108	85	66	111	295
Royal Free	69	39	70	80	63	83	79	270
<b>Mean per team on call</b>	<b>139</b>	<b>138</b>	<b>164</b>	<b>156</b>	<b>151</b>	<b>150</b>	<b>167</b>	<b>538</b>
<b>TOTAL</b>	<b>970</b>	<b>964</b>	<b>1149</b>	<b>1093</b>	<b>1058</b>	<b>1047</b>	<b>1168</b>	<b>3763</b>
<b>Cardiothoracic</b>								
Birmingham	25	17	31	19	27	19	26	86
Glasgow	17	11	9	11	15	6	13	39
Harefield	20	24	32	31	36	32	37	119
Manchester	27	23	33	17	34	33	21	101
Newcastle	24	10	17	14	31	25	19	84
Papworth	38	28	36	35	28	50	33	131
<b>Mean per team on call</b>	<b>50</b>	<b>38</b>	<b>53</b>	<b>42</b>	<b>57</b>	<b>55</b>	<b>50</b>	<b>187</b>
<b>TOTAL</b>	<b>151</b>	<b>113</b>	<b>158</b>	<b>127</b>	<b>171</b>	<b>165</b>	<b>149</b>	<b>560</b>

## Objective 4 – Increase the number of organs retrieved and transplanted from deceased donors (continued)

Fig. 4.1 Number of abdominal and cardiothoracic organs retrieved by NORS teams (DBD)

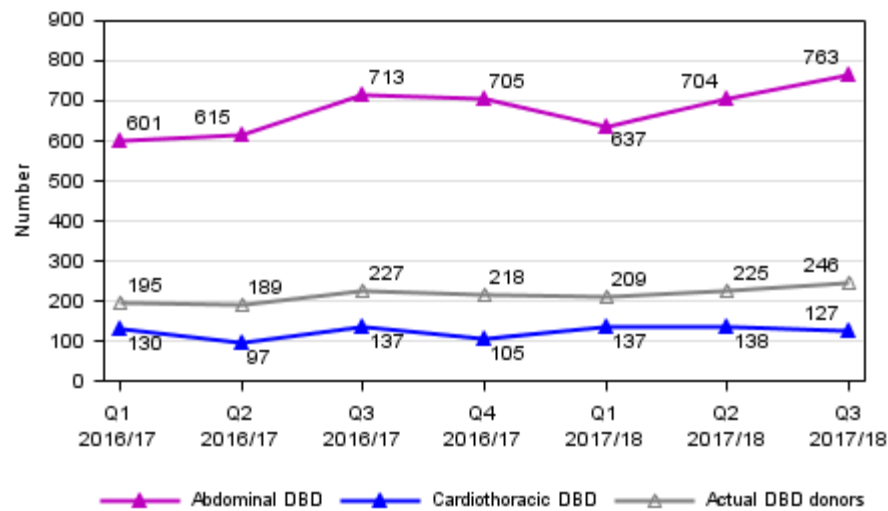


Fig. 4.2 Number of abdominal organs accepted, retrieved and transplanted (DBD)

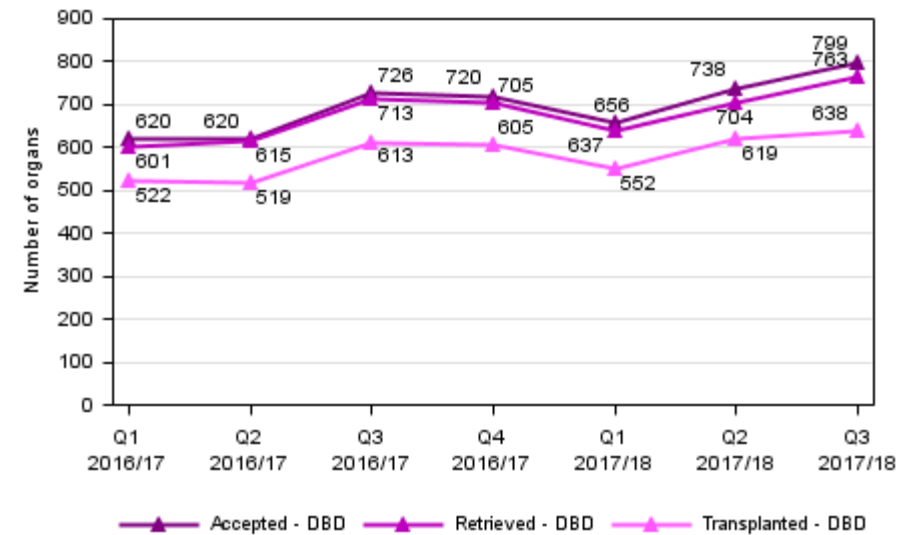


Fig. 4.3 Mean number of abdominal and cardiothoracic organs retrieved per NORS team on call (DBD)

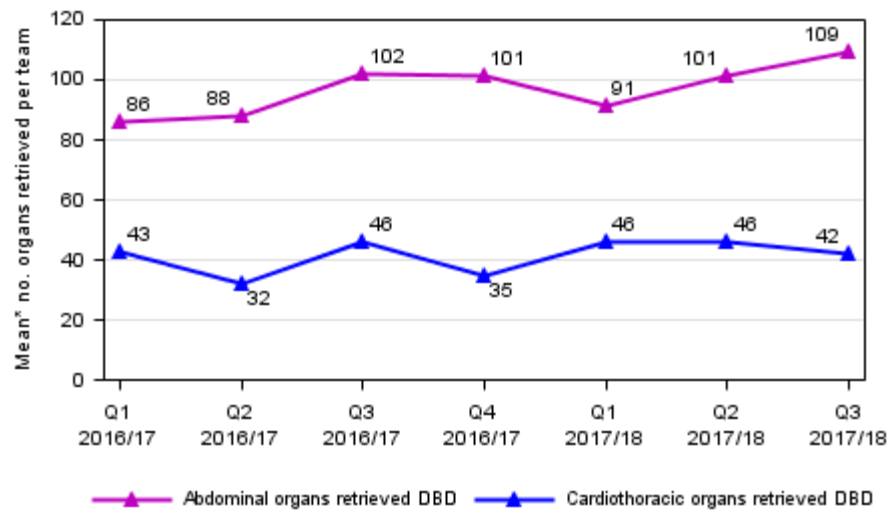


Fig. 4.4 Number of cardiothoracic organs accepted, retrieved and transplanted (DBD)

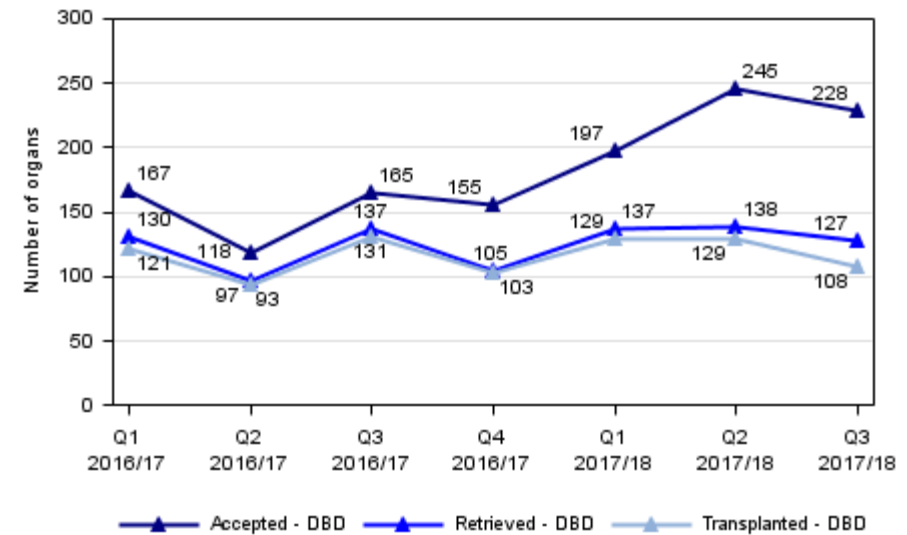


Fig. 4.5 Number of abdominal and cardiothoracic organs retrieved by NORS teams (DCD)

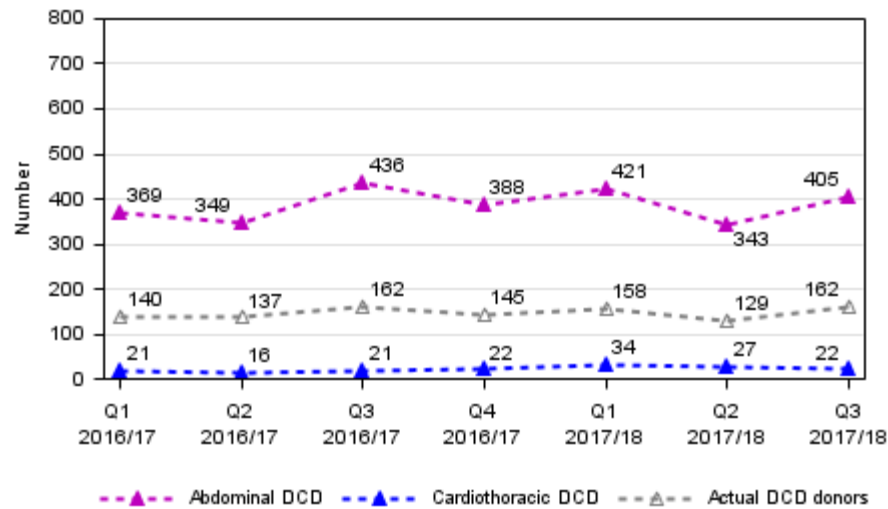


Fig. 4.6 Number of abdominal organs accepted, retrieved and transplanted (DCD)

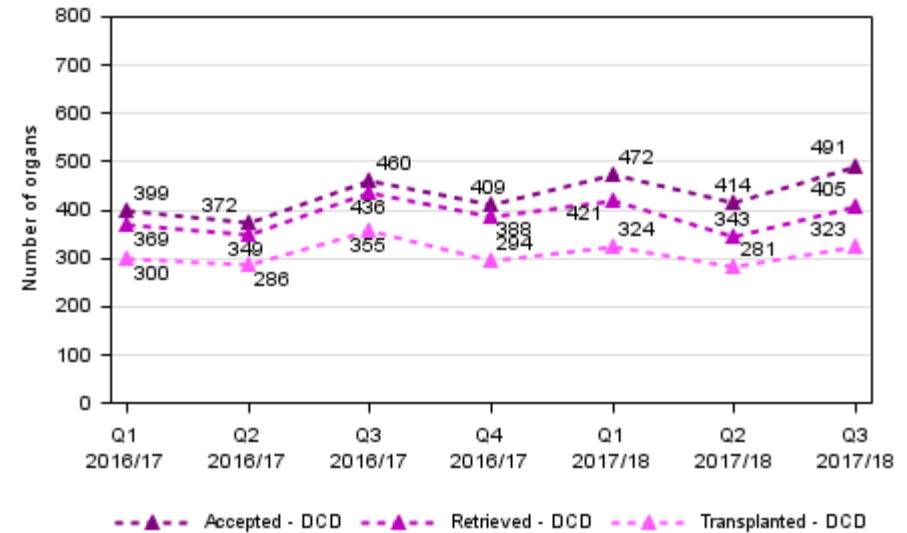


Fig. 4.7 Mean number of abdominal and cardiothoracic organs retrieved per NORS team on call (DCD)

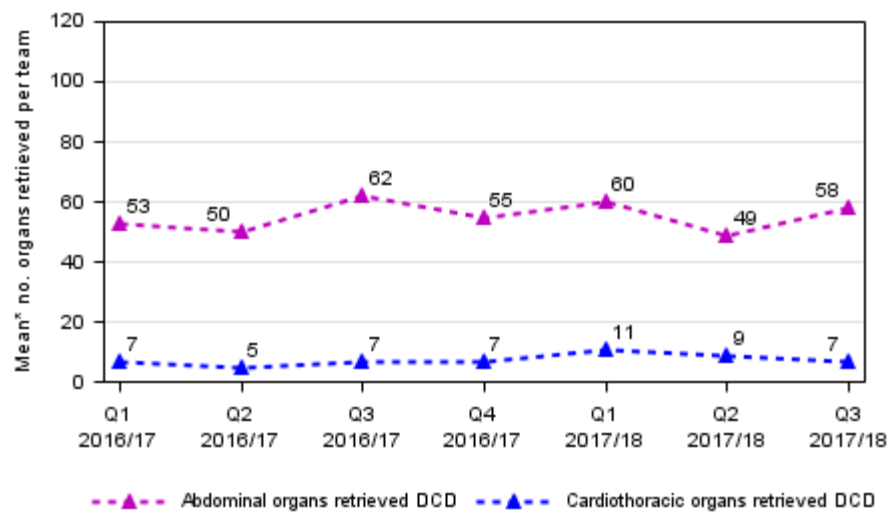
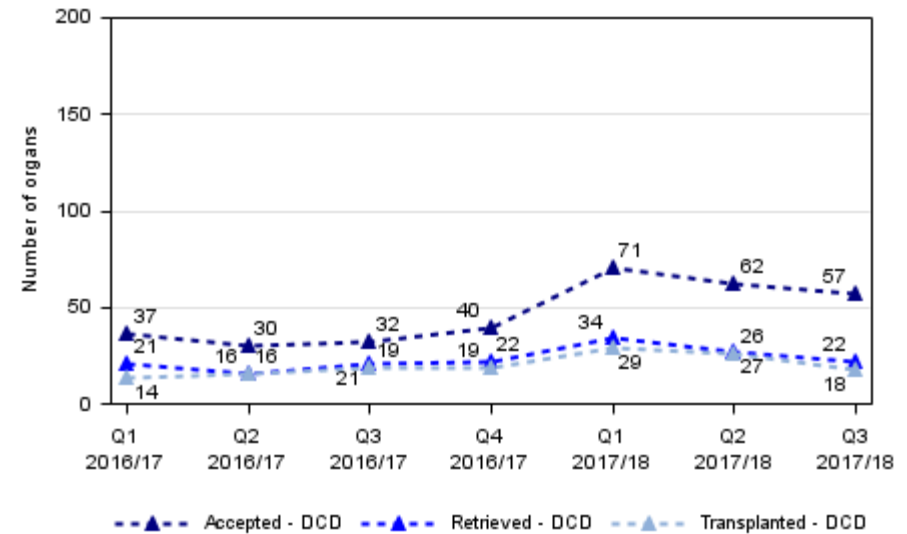


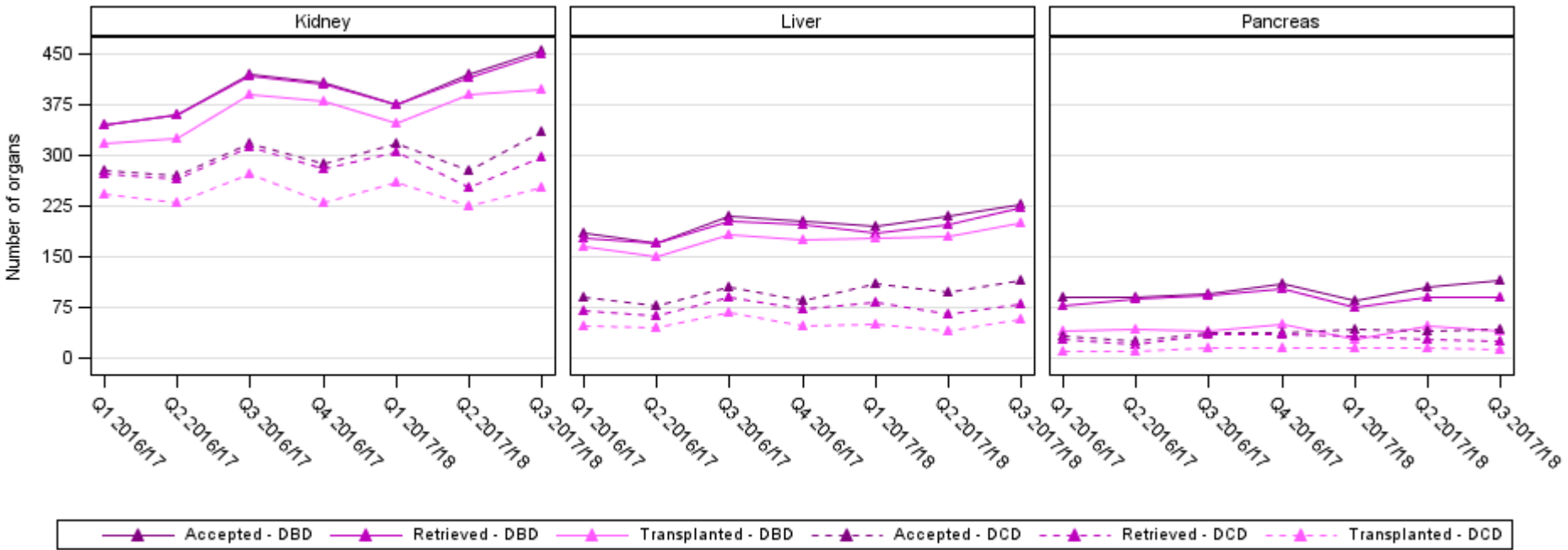
Fig. 4.8 Number of cardiothoracic organs accepted, retrieved and transplanted (DCD)





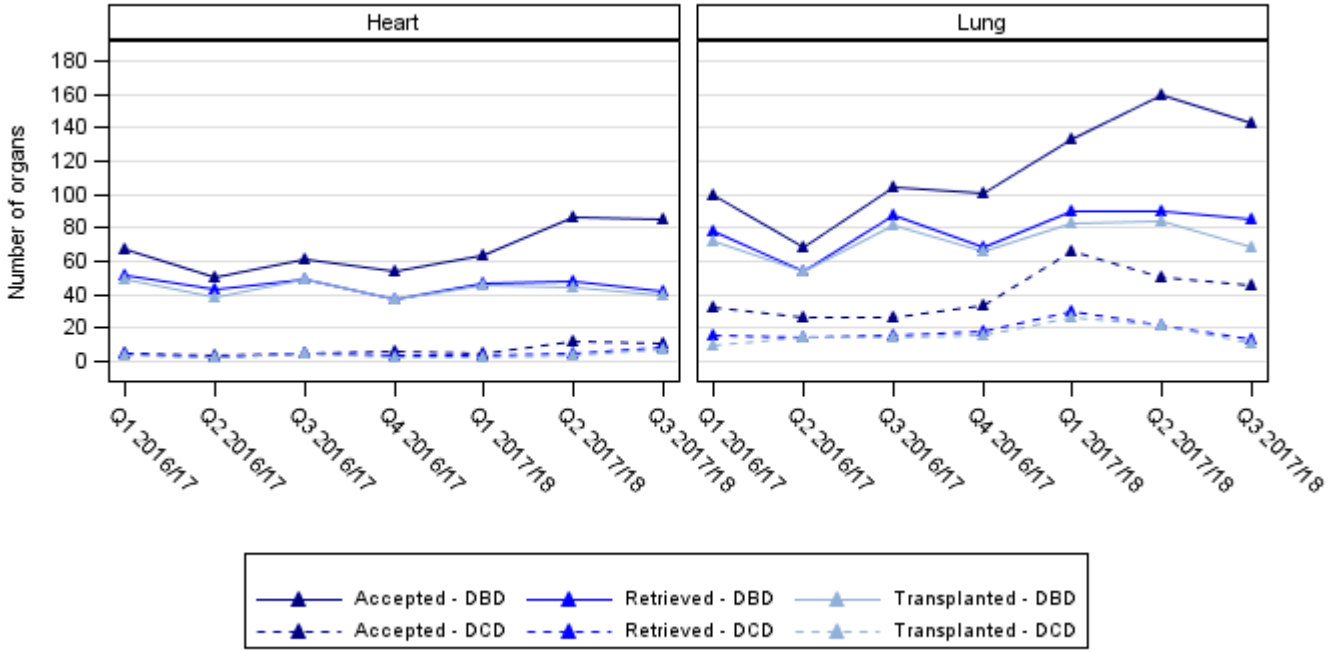
**Objective 4 – Increase the number of organs retrieved and transplanted from deceased donors (continued)**

**Fig. 4.9 Number of abdominal organs accepted, retrieved and transplanted, by organ type**

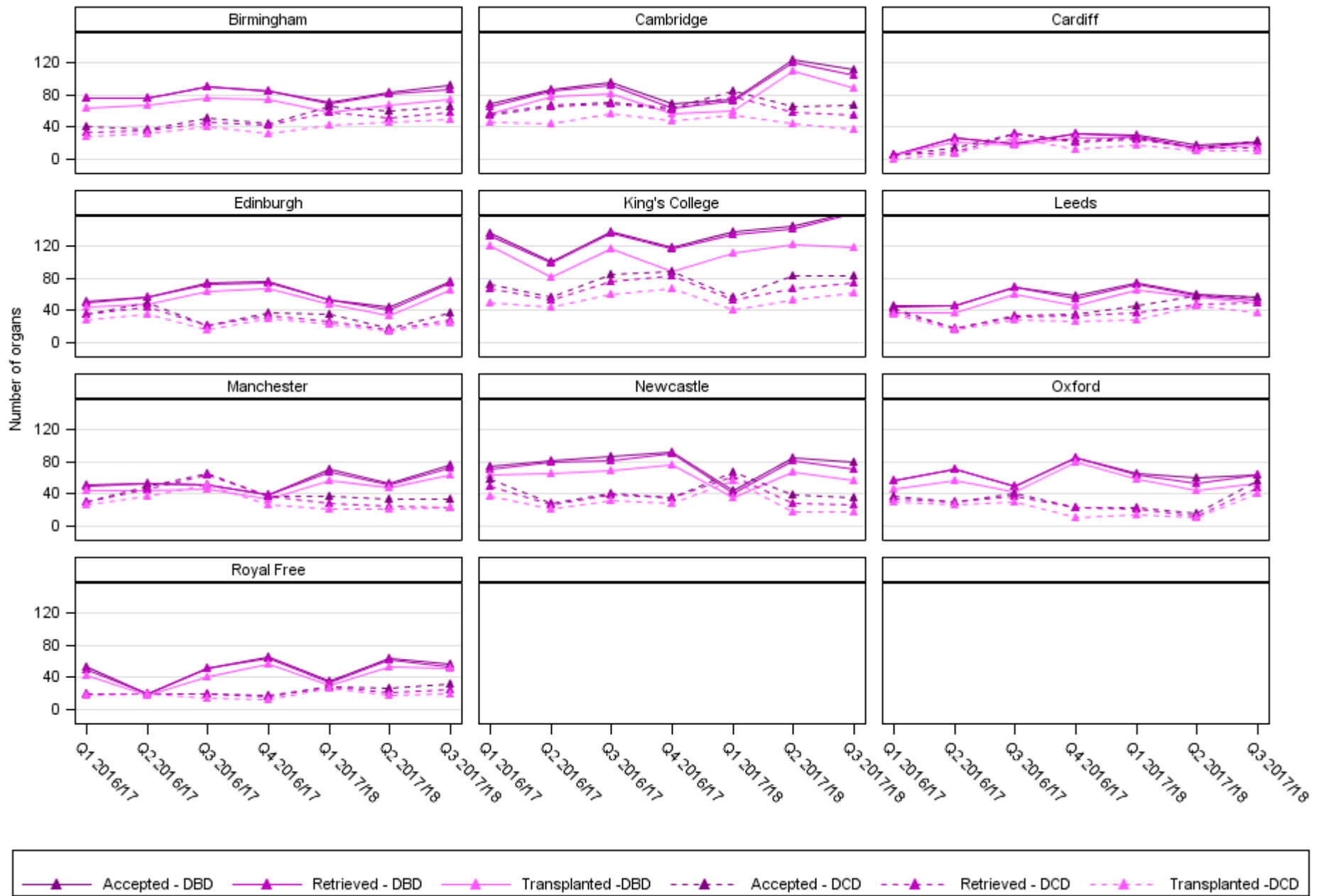


**Objective 4 – Increase the number of organs retrieved and transplanted from deceased donors (continued)**

**Fig. 4.10 Number of cardiothoracic organs accepted, retrieved and transplanted, by organ type**

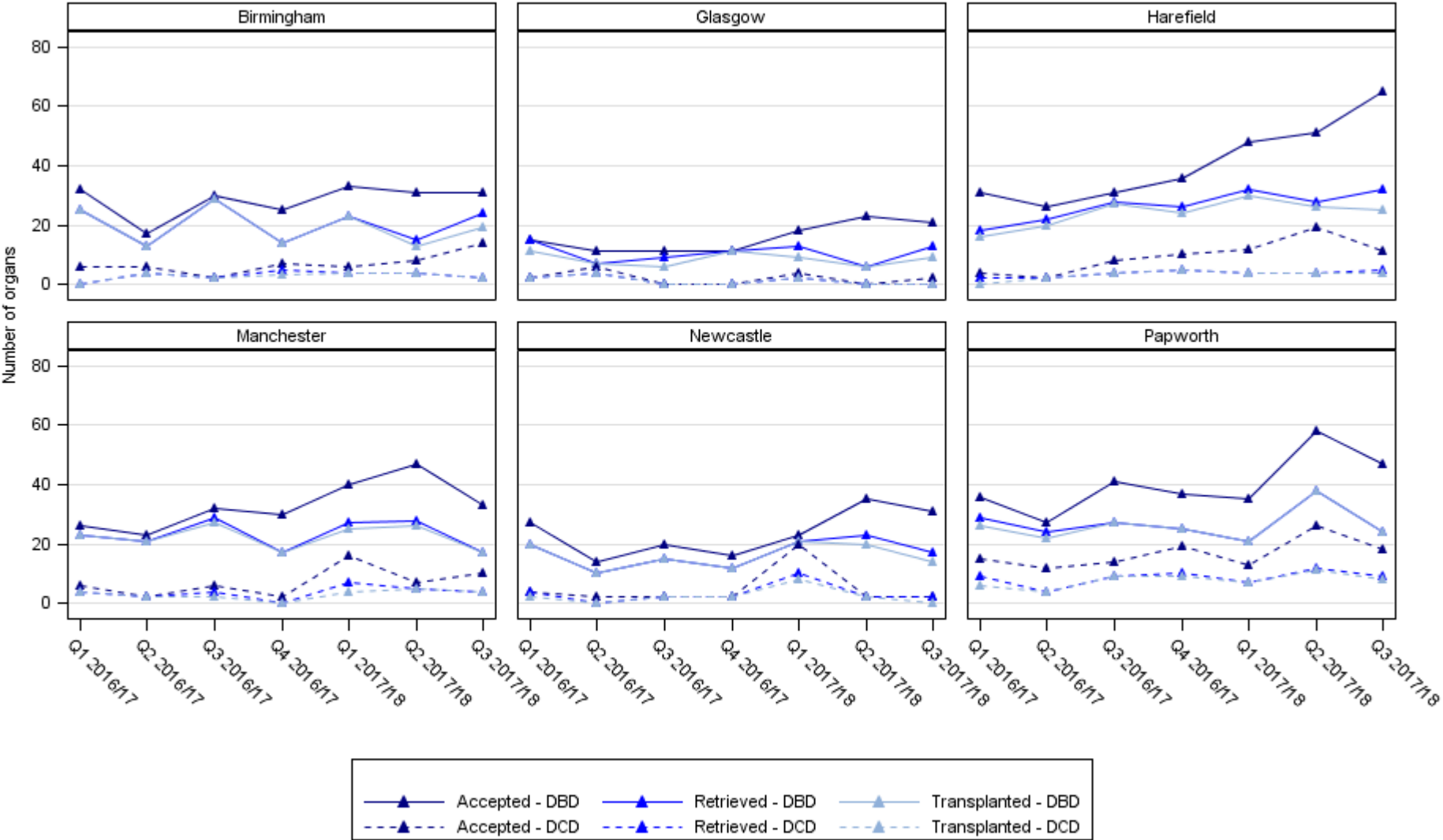


**Fig. 4.11 Number of abdominal organs accepted, retrieved and transplanted, by NORS team that attended**



**Objective 4 – Increase the number of organs retrieved and transplanted from deceased donors (continued)**

**Fig. 4.12 Number of cardiothoracic organs accepted, retrieved and transplanted, by NORS team that attended**



### 3.2 Objective 5 – Minimise organ retrieval damage

**Table 5.1: Retrieval damage reported for abdominal and cardiothoracic organs (DBD and DCD) retrieved by NORS teams**

Damage reported by receiving surgeon through the HTA B form													
	Feb 2016/17	Mar 2016/17	Apr 2017/18	May 2017/18	Jun 2017/18	Jul 2017/18	Aug 2017/18	Sep 2017/18	Oct 2017/18	Nov 2017/18	Dec 2017/18	Jan 2017/18	YTD 2017/18 (Apr-Jan)
No. organs retrieved with moderate/severe damage reported	21	37	27	29	20	20	17	17	23	28	25	39	245
No. organs not txd due to damage	1	8	10	6	3	1	4	1	4	6	6	10	51
No. organs not txd due to damage as a % of those with mod/sev damage reported	4.8	21.6	37.0	20.7	15.0	5.0	23.5	5.9	17.4	21.4	24.0	25.6	20.8
No. organs not txd due to damage as a % of all organs retrieved*	0.3	1.9	3.0	1.3	0.8	0.3	1.0	0.3	1.0	1.4	1.6	2.0	1.3

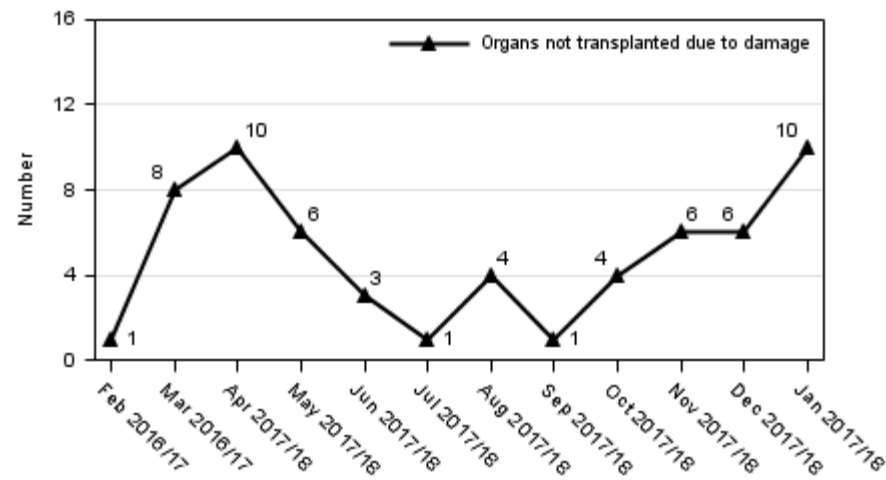
**Table 5.2: Abdominal and cardiothoracic organs (DBD and DCD) retrieved and not transplanted due to retrieval damage, by NORS team that retrieved**

Retrieval team	Number of organs (kidneys, livers, pancreases, hearts and lungs) not transplanted due to damage													
	Feb 2016/17	Mar 2016/17	Apr 2017/18	May 2017/18	Jun 2017/18	Jul 2017/18	Aug 2017/18	Sep 2017/18	Oct 2017/18	Nov 2017/18	Dec 2017/18	Jan 2017/18	YTD 2017/18 (Apr-Jan)	YTD % of all organs retrieved*
<b>Abdominal</b>														
Birmingham	0	0	5	1	0	0	0	0	0	2	0	1	9	2.0
Cambridge	0	1	0	1	0	0	0	1	2	1	0	1	6	1.0
Cardiff	0	0	0	2	0	0	0	0	0	0	0	0	2	1.3
Edinburgh	0	0	1	0	0	0	0	0	0	1	1	1	4	1.4
King's College	0	2	2	1	1	1	0	0	1	1	1	0	8	1.1
Leeds	0	1	1	0	0	0	0	0	0	0	1	3	5	1.4
Manchester	0	1	1	0	0	0	0	0	0	0	0	0	1	0.3
Newcastle	0	1	0	0	1	0	3	0	1	0	1	1	7	1.9
Oxford	0	0	0	0	0	0	1	0	0	0	0	2	3	1.0
Royal Free	1	2	0	1	1	0	0	0	0	1	0	1	4	1.5
<b>Cardiothoracic</b>														
Birmingham	0	0	0	0	0	0	0	0	0	0	0	0	0	0.0
Glasgow	0	0	0	0	0	0	0	0	0	0	2	0	2	5.1
Harefield	0	0	0	0	0	0	0	0	0	0	0	0	0	0.0
Manchester	0	0	0	0	0	0	0	0	0	0	0	0	0	0.0
Newcastle	0	0	0	0	0	0	0	0	0	0	0	0	0	0.0
Papworth	0	0	0	0	0	0	0	0	0	0	0	0	0	0.0

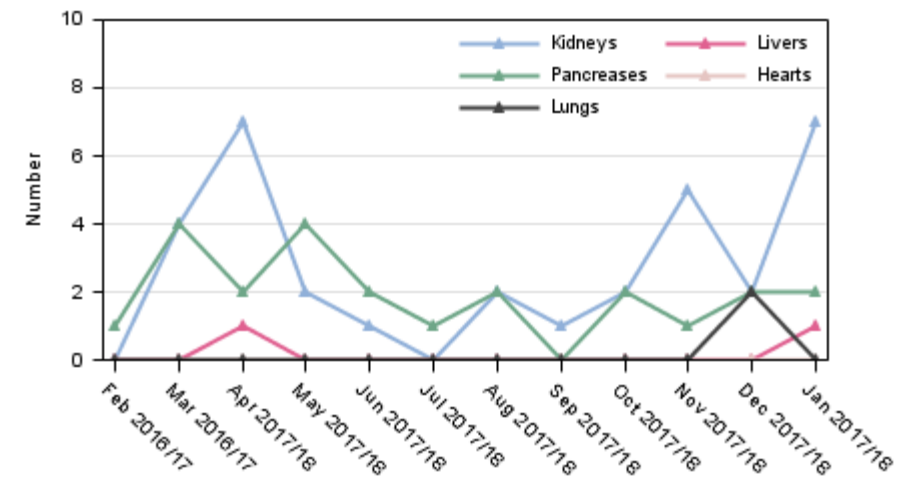
\*where grade of surgical damage reported (8% missing for reasons such as not received with intent to transplant, transplanted abroad, went for research or genuinely missing).

## Objective 5 – Minimise organ retrieval damage (continued)

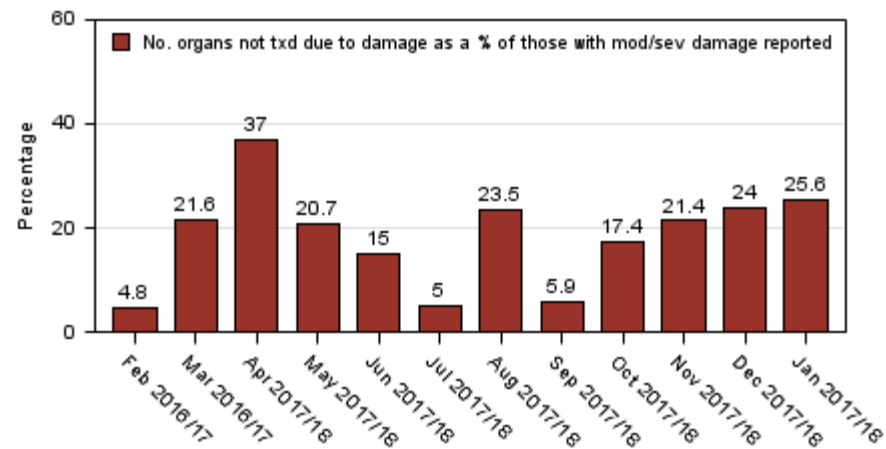
**Fig. 5.1** Number of abdominal and cardiothoracic organs (DBD and DCD) not transplanted due to damage



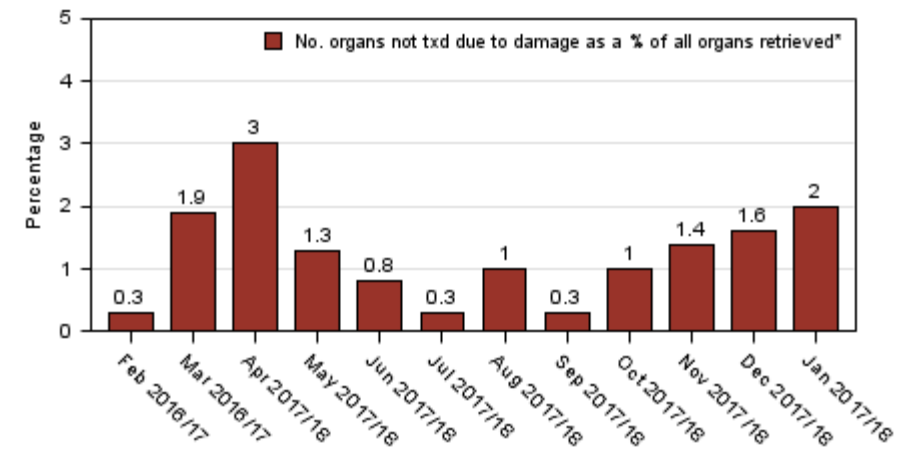
**Fig. 5.2** Number of abdominal and cardiothoracic organs (DBD and DCD) not transplanted due to damage, by organ type



**Fig. 5.3** Number of organs (abdominal and cardiothoracic, DBD and DCD) not transplanted due to damage as a proportion of those where moderate/severe damage reported



**Fig. 5.4** Number of organs (abdominal and cardiothoracic, DBD and DCD) not transplanted due to damage as a proportion of all organs retrieved\*



\*where grade of surgical damage reported (8% missing for reasons such as not received with intent to transplant, transplanted abroad, went for research or genuinely missing).

### 3.3. Objective 6 – Maximise DCD organ retrieval by meeting stand-down target

Stand-down target = abdominal teams should wait 3 hours from treatment withdrawal before standing down on kidney retrieval from DCDs.

**Table 6.1: Breakdown of proceeding and non-proceeding DCD donors attended by a NORS team**

	Q1 2016/17	Q2 2016/17	Q3 2016/17	Q4 2016/17	Q1 2017/18	Q2 2017/18	Q3 2017/18	YTD 2017/18 (Apr-Jan)
No. proceeding/non-proceeding DCDs	223	202	225	235	232	190	222	737
% non-proceeding	38.6	33.7	30.7	39.6	32.8	32.6	32.0	32.7
No. non-proceeding	86	68	69	93	76	62	71	241
% where stand-down target not met	7.0	1.5	2.9	9.7	10.5	6.5	11.3	10.0
% where stand-down target met	80.2	32.4	49.3	65.6	73.7	66.1	71.8	69.3
% where stand-down info not reported	12.8	66.2	47.8	24.7	15.8	27.4	16.9	20.7

**Table 6.2: Breakdown of proceeding and non-proceeding DCD donors by attending NORS abdominal team, last 6 months (up to Jan)**

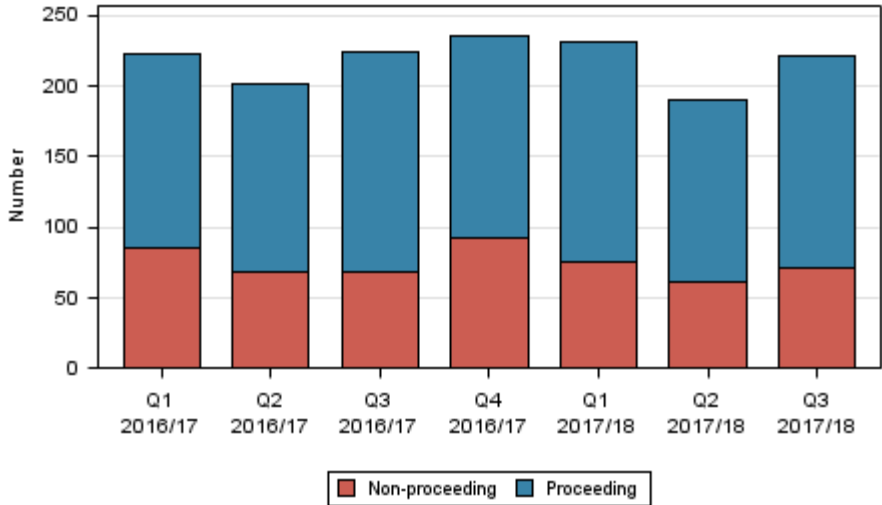
	Birmingham	Cambridge	Cardiff	Edinburgh	King's College	Leeds	Manchester	Newcastle	Oxford	Royal Free
No. proceeding/non-proceeding DCDs	53	67	21	32	75	56	38	38	35	32
% non-proceeding	32.1	29.9	28.6	31.3	28.0	30.4	50.0	39.5	37.1	31.3
No. non-proceeding	17	20	6	10	21	17	19	15	13	10
% where stand-down target not met	11.8	5.0	33.3	0.0	19.0	5.9	15.8	13.3	0.0	10.0
% where stand-down target met	41.2	70.0	66.7	40.0	61.9	82.4	68.4	66.7	92.3	70.0
% where stand-down info not reported	47.1	25.0	0.0	60.0	19.0	11.8	15.8	20.0	7.7	20.0

**Table 6.3: Breakdown of proceeding and non-proceeding DCD donors by Organ Donation Services team, last 6 months (up to Jan)**

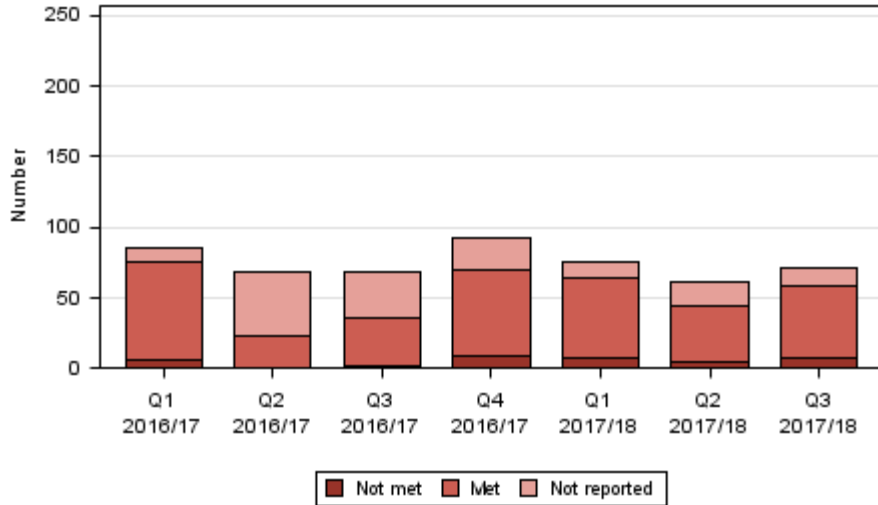
	Eastern	London	Midlands	North West	Northern	Northern Ireland	Scotland	South Central	South East	South Wales	South West	Yorkshire
No. proceeding/non-proceeding DCDs	63	27	54	60	17	12	30	44	41	22	31	46
% non-proceeding	36.5	25.9	25.9	31.7	35.3	25.0	33.3	36.4	29.3	36.4	35.5	41.3
No. non-proceeding	23	7	14	19	6	3	10	16	12	8	11	19
% where stand-down target not met	8.7	28.6	7.1	15.8	0.0	0.0	0.0	0.0	8.3	37.5	18.2	10.5
% where stand-down target met	69.6	57.1	64.3	68.4	66.7	66.7	50.0	81.3	91.7	25.0	27.3	84.2
% where stand-down info not reported	21.7	14.3	28.6	15.8	33.3	33.3	50.0	18.8	0.0	37.5	54.5	5.3

**Objective 6 – Maximise DCD organ retrieval by meeting stand-down target (continued)**

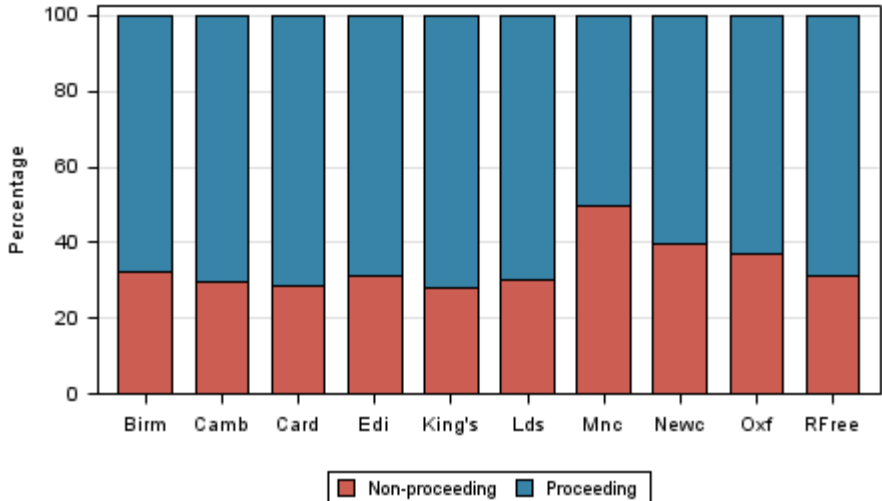
**Fig. 6.1 Number of proceeding and non-proceeding DCD donors attended by a NORS team**



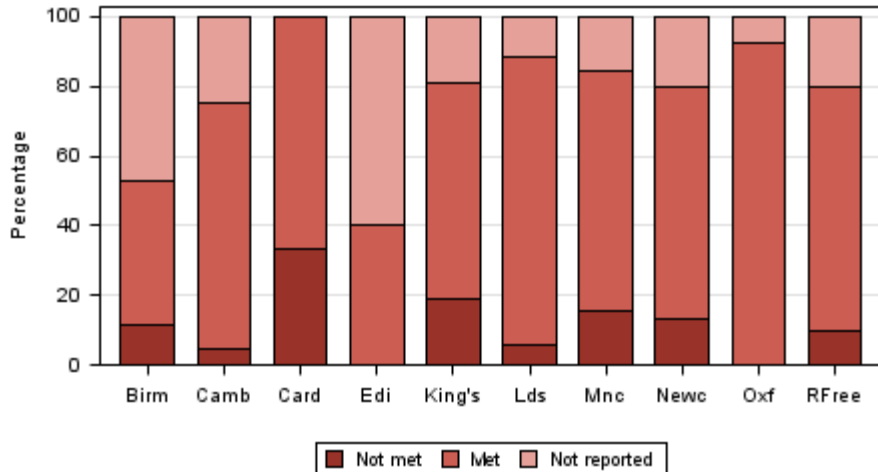
**Fig. 6.2 Number of non-proceeding DCD donors attended by a NORS team where 3 hour stand-down time not met, met or not reported**



**Fig. 6.3 Proportion of proceeding and non-proceeding DCD donors attended by each NORS abdominal team, last 6 months (up to Jan)**



**Fig. 6.4 Proportion of non-proceeding DCD donors attended by each abdominal NORS team where 3 hour stand-down time not met, met or not reported, last 6 months (up to Jan)**





### 3.4. Objective 7 – Timely dispatch of retrieval teams to donor hospital

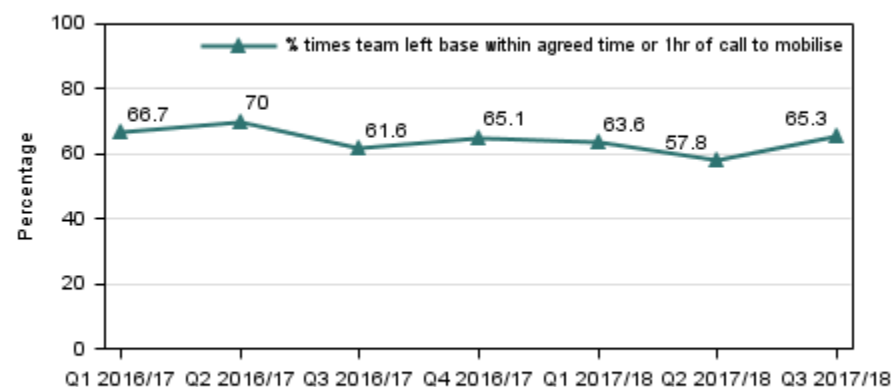
Table 7.1: Proportion of times NORS teams left base within the agreed time or within 1 hour of the call to mobilise

Retrieval team	Proportion of donor attendances where team left base within the agreed time or within 1 hour of the call to mobilise*							
	Q1 2016/17	Q2 2016/17	Q3 2016/17	Q4 2016/17	Q1 2017/18	Q2 2017/18	Q3 2017/18	YTD 2017/18 (Apr-Jan)
<b>Abdominal</b>								
Birmingham	63.3	81.3	70.9	70.5	69.2	70.9	56.9	64.6
Cambridge	63.6	58.2	46.3	44.6	61.5	47.8	58.7	54.3
Cardiff	87.5	94.1	73.7	68.4	87.5	50.0	70.6	72.1
Edinburgh	82.5	71.1	72.2	64.4	66.7	52.0	72.2	63.9
King's College	62.7	72.9	58.8	65.8	60.3	64.9	70.6	63.5
Leeds	62.5	77.3	66.7	76.3	68.6	64.1	79.6	69.0
Manchester	83.8	79.1	65.0	73.7	68.4	53.1	63.3	62.9
Newcastle	75.0	69.8	72.3	68.6	81.3	69.6	65.9	73.7
Oxford	81.1	76.3	81.6	68.2	69.7	70.4	66.7	69.2
Royal Free	35.7	45.0	46.7	48.5	33.3	40.6	36.4	38.5
<b>TOTAL</b>	<b>68.4</b>	<b>72.1</b>	<b>64.3</b>	<b>64.4</b>	<b>66.3</b>	<b>59.7</b>	<b>64.5</b>	<b>62.8</b>
<b>Cardiothoracic</b>								
Birmingham	59.3	72.7	50.0	57.7	65.2	45.5	73.1	62.5
Glasgow	81.8	37.5	57.1	88.9	28.6	22.2	50.0	38.7
Harefield	71.4	62.5	46.4	59.0	60.0	45.2	62.2	56.9
Manchester	47.4	56.3	33.3	58.3	41.4	45.8	66.7	50.0
Newcastle	47.1	30.0	52.9	77.8	45.0	54.5	50.0	52.0
Papworth	62.5	78.3	65.8	77.8	69.0	69.8	84.4	70.7
<b>TOTAL</b>	<b>61.2</b>	<b>62.1</b>	<b>52.3</b>	<b>67.1</b>	<b>55.1</b>	<b>52.1</b>	<b>68.1</b>	<b>58.4</b>
<b>TOTAL</b>	<b>66.7</b>	<b>70.0</b>	<b>61.6</b>	<b>65.1</b>	<b>63.6</b>	<b>57.8</b>	<b>65.3</b>	<b>61.7</b>

\*Time not reported in 3% of attendances. Note that a 15 minute margin has been applied to the SN-OD recorded agreed time.

## Objective 7 – Timely dispatch of retrieval teams to donor hospital (continued)

**Fig. 7.1 Proportion of times NORS teams left base within the agreed time or within 1 hour of the call to mobilise\***



\*Time not reported in 3% of attendances. Note that a 15 minute margin has been applied to the SN-OD recorded agreed time.

**Table 7.2: Proportion of times NORS teams left base within the agreed time or within 1 hour of the call to mobilise, by Organ Donation Services Team**

Organ Donation Services Team	Proportion of donor attendances where team left base within the agreed time or within 1 hour of the call to mobilise*							
	Q1 2016/17	Q2 2016/17	Q3 2016/17	Q4 2016/17	Q1 2017/18	Q2 2017/18	Q3 2017/18	YTD 2017/18 (Apr-Jan)
Eastern	60.9	60.6	54.7	47.2	58.5	64.8	68.9	62.6
London	62.3	63.9	54.0	69.2	59.0	56.1	56.2	57.0
Midlands	69.1	70.8	54.5	66.7	57.4	50.8	57.4	53.9
North West	67.6	78.8	76.3	71.4	65.9	62.1	61.9	62.5
Northern	75.0	65.2	40.0	68.6	70.4	38.2	75.9	60.9
Northern Ireland	50.0	64.7	83.3	50.0	70.0	93.8	81.3	83.3
Scotland	76.2	65.1	66.7	70.6	61.9	52.2	65.0	60.7
South Central	70.4	78.0	63.0	65.1	60.5	48.8	58.2	56.1
South East	69.0	67.3	60.9	62.3	58.5	60.6	70.4	63.1
South Wales	80.0	78.9	64.7	64.0	92.9	68.2	72.2	73.8
South West	52.4	83.9	65.0	64.3	67.9	64.1	71.9	67.6
Yorkshire	65.9	65.9	60.8	71.4	70.2	51.1	70.4	63.8
<b>TOTAL</b>	<b>66.7</b>	<b>70.0</b>	<b>61.6</b>	<b>65.1</b>	<b>63.6</b>	<b>57.8</b>	<b>65.3</b>	<b>61.7</b>

\*Time not reported in 3% of attendances. Note that a 15 minute margin has been applied to the SN-OD recorded agreed time.

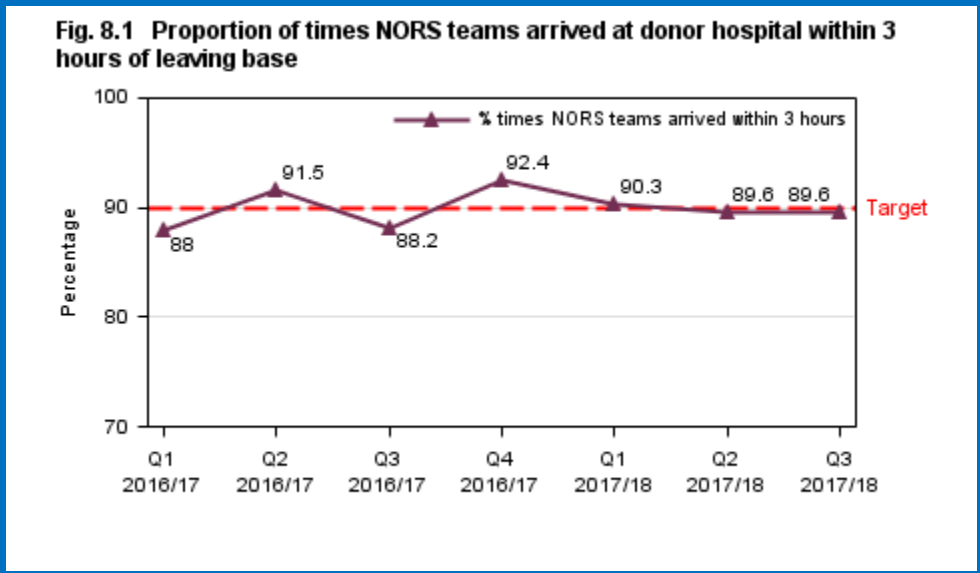
### 3.5. Objective 8 - Timely arrival of retrieval team at donor hospital

Table 8.1: Proportion of times each team arrived at the donor hospital within 3 hours of leaving base

Retrieval team	Proportion of donor attendances where team arrived within 3 hours of leaving base*							
	Q1 2016/17	Q2 2016/17	Q3 2016/17	Q4 2016/17	Q1 2017/18	Q2 2017/18	Q3 2017/18	YTD 2017/18 (Apr-Jan)
<b>Abdominal</b>								
Birmingham	74.5	91.8	87.5	93.2	86.8	90.9	93.2	89.1
Cambridge	92.9	96.4	87.3	93.0	90.8	92.5	87.3	90.9
Cardiff	100.0	82.4	89.5	85.0	83.3	71.4	88.2	82.4
Edinburgh	87.2	92.1	88.9	91.1	90.9	68.0	91.7	84.5
King's College	90.4	90.1	89.5	94.9	93.6	94.9	90.6	92.4
Leeds	96.9	95.7	95.6	100.0	100.0	100.0	95.9	97.9
Manchester	94.7	95.3	95.3	100.0	97.4	93.8	89.8	93.2
Newcastle	88.7	93.0	79.6	92.2	87.8	82.6	90.2	86.3
Oxford	94.6	87.2	89.5	93.2	97.0	96.3	95.6	96.7
Royal Free	85.7	100.0	100.0	87.9	85.2	93.8	87.9	89.9
<b>TOTAL</b>	<b>89.4</b>	<b>92.5</b>	<b>89.7</b>	<b>93.5</b>	<b>91.5</b>	<b>90.6</b>	<b>91.2</b>	<b>90.9</b>
<b>Cardiothoracic</b>								
Birmingham	92.6	100.0	91.7	92.6	91.3	95.2	80.8	89.9
Glasgow	72.7	62.5	57.1	66.7	71.4	55.6	90.0	71.0
Harefield	89.3	87.5	92.9	90.0	93.3	87.5	86.5	88.9
Manchester	78.9	87.5	85.0	91.7	93.1	83.3	85.7	87.8
Newcastle	66.7	80.0	58.8	83.3	75.0	72.7	58.3	70.0
Papworth	87.1	87.0	84.2	91.7	79.3	93.0	90.6	89.4
<b>TOTAL</b>	<b>83.6</b>	<b>87.5</b>	<b>82.8</b>	<b>89.0</b>	<b>86.2</b>	<b>86.4</b>	<b>84.1</b>	<b>85.9</b>
<b>TOTAL</b>	<b>88.0</b>	<b>91.5</b>	<b>88.2</b>	<b>92.4</b>	<b>90.3</b>	<b>89.6</b>	<b>89.6</b>	<b>89.7</b>

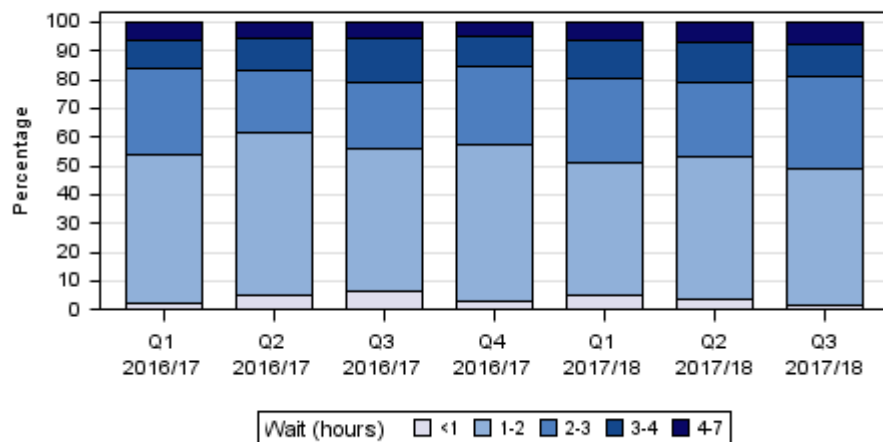
\*Travel time not reported in 3% of attendances.

**Objective 8 – Timely arrival of retrieval team at donor hospital (continued)**

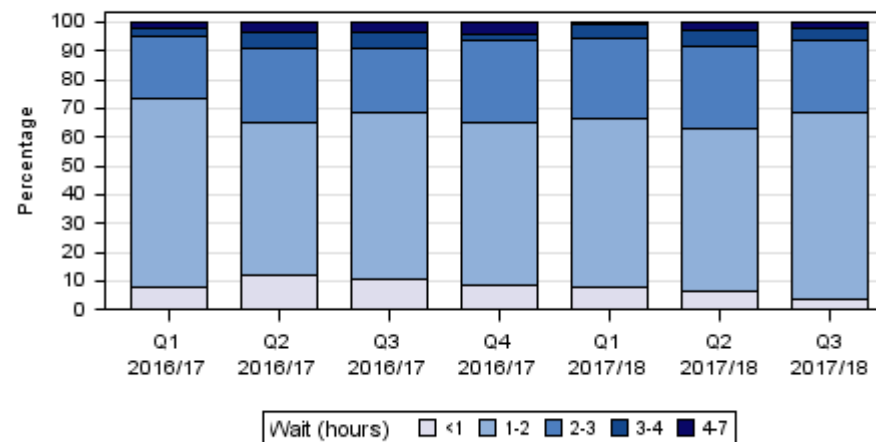


### 3.6. Objective 9 – Minimise wait at donor hospital prior to retrieval

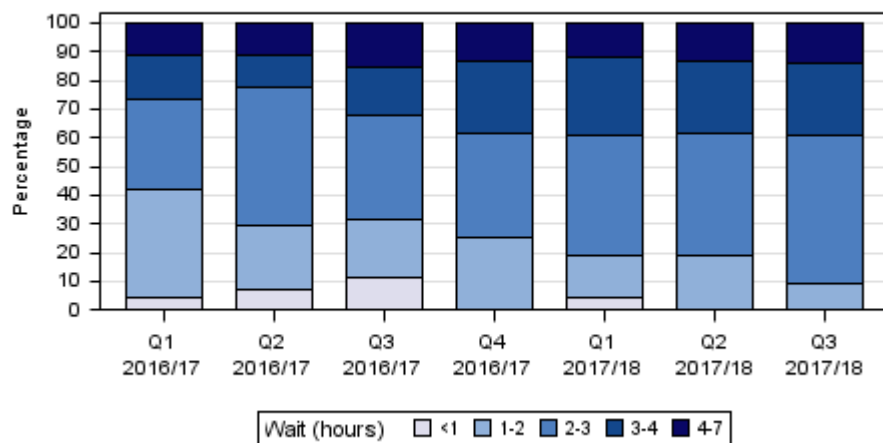
**Fig. 9.1 Wait at donor hospital to start retrieval - proceeding DBD abdominal team attendances**



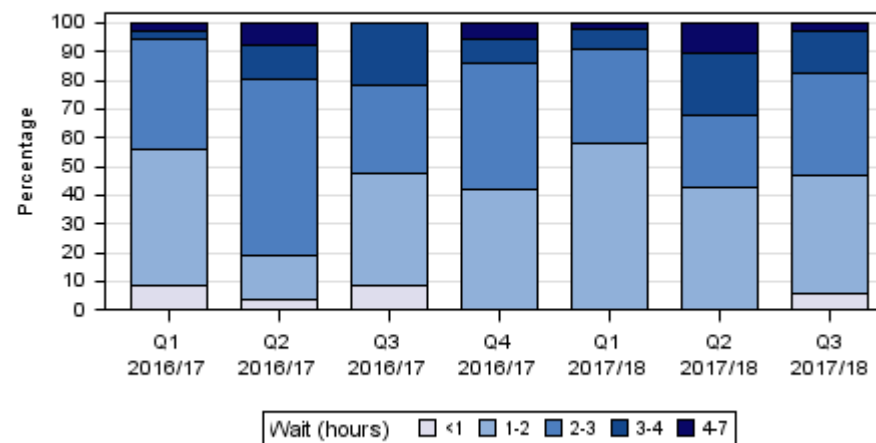
**Fig. 9.2 Wait at donor hospital for treatment withdrawal - potential DCD abdominal team attendances**



**Fig. 9.3 Wait at donor hospital to start retrieval - proceeding DBD cardiothoracic team attendances**



**Fig. 9.4 Wait at donor hospital for treatment withdrawal - potential DCD cardiothoracic team attendances**



Note: Wait could not be calculated in 6% of attendances. Comments recorded on the Retrieval Team Information form indicate that common causes of delays at the donor hospital include waiting for another retrieval team to arrive, waiting for theatre space or anaesthetists, delays in organ offering, delays caused by use of organ preservation technologies, verification of brain stem death test results and delays in getting recipients ready for transplantation.

## Objective 9 – Minimise wait at donor hospital prior to retrieval (continued)

Table 9.1: Extended wait at donor hospital to start the retrieval (DBD) or for treatment withdrawal (DCD)\*

	Q1 2016/17	Q2 2016/17	Q3 2016/17	Q4 2016/17	Q1 2017/18	Q2 2017/18	Q3 2017/18	YTD 2017/18 (Apr-Jan)
<b>Proceeding DBD Abdominal</b>								
No. attendances where team waited 3+ hrs	30	31	47	33	40	46	46	144
% of attendances	15.8	16.8	21.1	15.4	19.5	21.0	19.0	18.8
<b>Potential DCD Abdominal</b>								
No. attendances where team waited 3+ hrs	11	18	19	14	13	15	14	49
% of attendances	5.3	9.5	9.0	6.5	5.9	8.5	6.5	7.1
<b>Proceeding DBD Cardiothoracic</b>								
No. attendances where team waited 3+ hrs	19	12	23	23	27	26	25	91
% of attendances	26.8	22.2	31.9	38.3	39.1	38.2	39.1	38.7
<b>Potential DCD Cardiothoracic</b>								
No. attendances where team waited 3+ hrs	2	5	5	5	4	9	6	21
% of attendances	5.9	19.2	21.7	13.9	9.3	32.1	17.6	16.7
<b>TOTAL</b>								
<b>No. attendances where team waited 3+ hrs</b>	<b>62</b>	<b>66</b>	<b>94</b>	<b>75</b>	<b>84</b>	<b>96</b>	<b>91</b>	<b>305</b>
<b>% of attendances</b>	<b>12.3</b>	<b>14.5</b>	<b>17.8</b>	<b>14.3</b>	<b>15.6</b>	<b>19.5</b>	<b>16.3</b>	<b>16.8</b>

\*Wait could not be calculated in 6% of attendances.

### 3.7. Objective 10 – Monitor activity across NORS teams

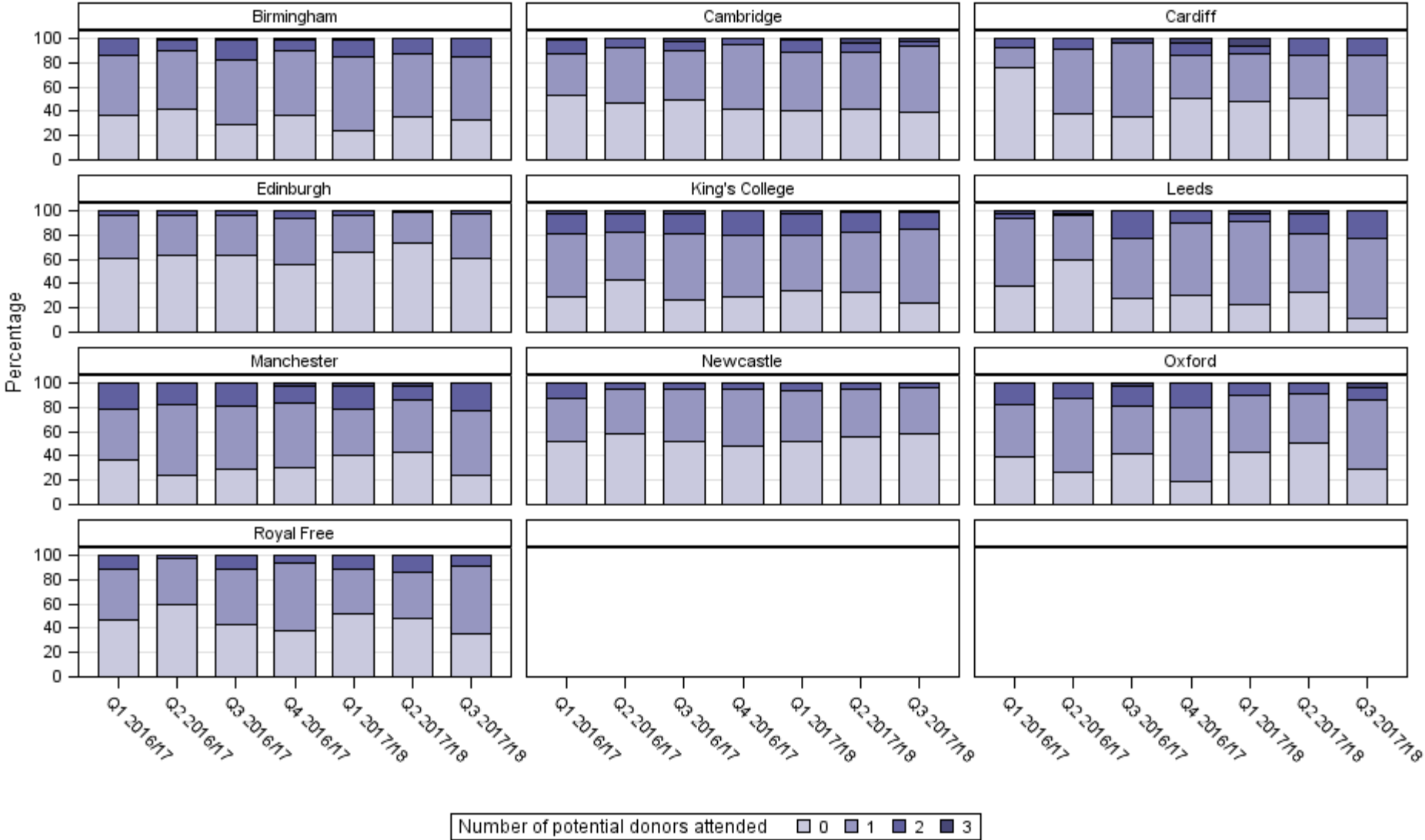
Table 10.1: Proportion of days each NORS team spent attending at least one potential donor when on call\*

Retrieval team	Proportion of days spent attending at least one potential donor when on call							
	Q1 2016/17	Q2 2016/17	Q3 2016/17	Q4 2016/17	Q1 2017/18	Q2 2017/18	Q3 2017/18	YTD 2017/18 (Apr-Jan)
<b>Abdominal</b>								
Birmingham	63.6	58.8	70.3	62.9	75.9	64.3	67.1	69.8
Cambridge	47.3	53.3	51.1	57.8	59.3	58.7	60.9	62.4
Cardiff	24.0	62.5	64.3	50.0	51.5	50.0	63.6	59.3
Edinburgh	39.6	37.0	37.0	44.4	34.1	26.1	39.1	34.6
King's College	70.3	57.6	72.8	71.1	65.9	67.4	76.1	70.6
Leeds	62.2	40.4	72.7	70.2	77.3	66.7	88.4	77.6
Manchester	63.0	75.6	70.8	69.8	59.6	56.8	75.5	65.6
Newcastle	48.4	42.4	47.8	52.2	48.4	44.6	42.4	45.8
Oxford	60.9	73.3	58.3	81.4	57.4	50.0	71.4	64.3
Royal Free	53.3	40.4	56.8	61.7	47.7	52.1	65.1	57.2
<b>OVERALL</b>	<b>54.0</b>	<b>52.0</b>	<b>58.1</b>	<b>60.8</b>	<b>56.5</b>	<b>53.0</b>	<b>62.1</b>	<b>58.9</b>
<b>Cardiothoracic</b>								
Birmingham	52.2	48.9	50.0	53.5	44.7	45.5	49.0	47.4
Glasgow	24.4	25.5	22.7	21.3	20.5	20.8	25.6	23.0
Harefield	56.5	46.7	45.8	72.1	51.1	61.4	57.1	59.1
Manchester	44.4	34.0	45.5	48.9	59.1	41.7	48.8	50.0
Newcastle	30.4	20.0	35.4	41.9	40.4	29.5	30.6	36.4
Papworth	51.1	44.7	65.9	57.4	54.5	68.7	48.8	59.9
<b>OVERALL</b>	<b>43.2</b>	<b>36.6</b>	<b>44.2</b>	<b>48.9</b>	<b>45.1</b>	<b>44.6</b>	<b>43.5</b>	<b>46.0</b>

\*Only on call donor attendances are included.

**Objective 10 – Monitor activity across NORS teams (continued)**

**Fig. 10.1 Proportions of days each abdominal NORS team spent attending different numbers of potential donors when on call**





**Objective 10 – Monitor activity across NORS teams (continued)**

**Fig. 10.2 Proportions of days each cardiothoracic NORS team spent attending different numbers of potential donors when on call**

